

# JF545

**max** 15500 kg

**max** 5450 x 1840 x 2750 mm

**max** 30 m  
with jib

**max** 28 m  
with jib

This model combines an articulated truck loader crane with a self-propelled crawler chassis. It offers a glimpse into the future of crawler cranes.



## Technical Information

Dimension	<b>L x W x H</b>	5450 x 1840 x 2750 mm
Stab. Area		6700 x 6700 mm

Crane & Options Weights		Kg
	JF545	13700
	/	3500
	SINGLE FALL	50
	JIBL426	1200
	BASKET	200

Winch		2600 kg 60 m - Ø 12 mm 36.5-47 m/min.
-------	--	---

JF545	Diesel Engine	KUBOTA V3307-CR-TE4B	55.4 kW 74 Hp
-------	---------------	----------------------	------------------

Speed		2.5 km/h
-------	--	----------

Gradeability		20°
--------------	--	-----



**Boom Length**  
1.0 - 28.2 m 40 sec.

**Electric Power Pack**  
13.5 kW  
400 VAC

**Rotation**  
360° / 1.0 rpm

**Working Angle**  
-15° / 80° 30 sec.

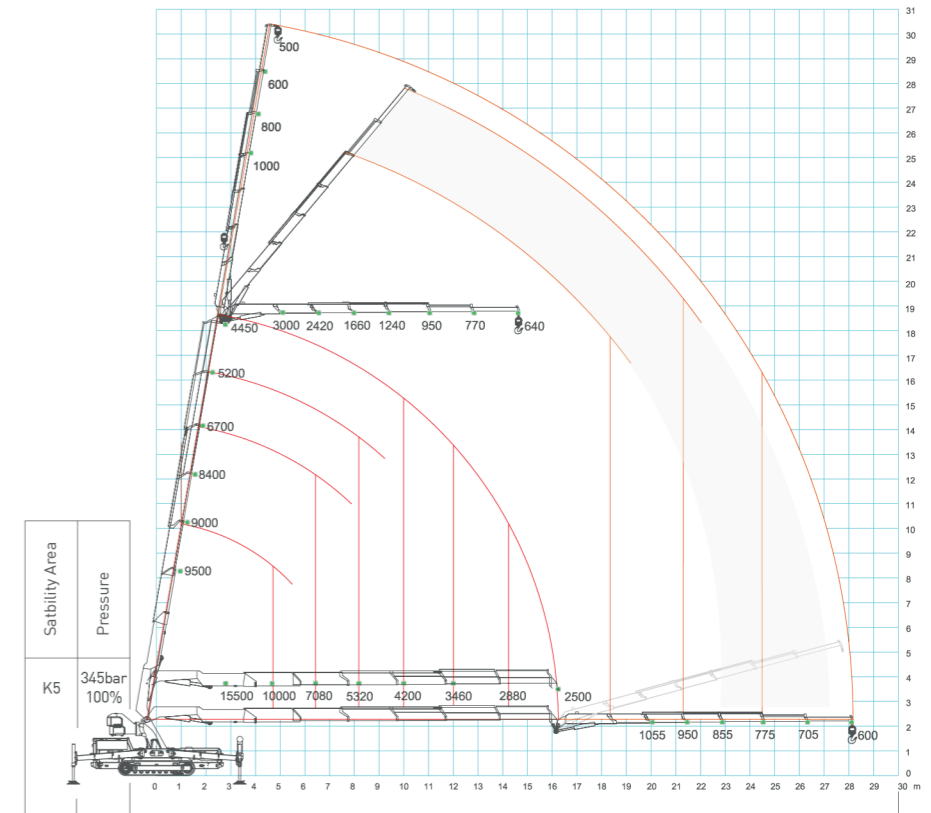
**Max. Track Load**  
0.85 kg/cm<sup>2</sup>

**Max. Outrigger Load**  
11.250 kg

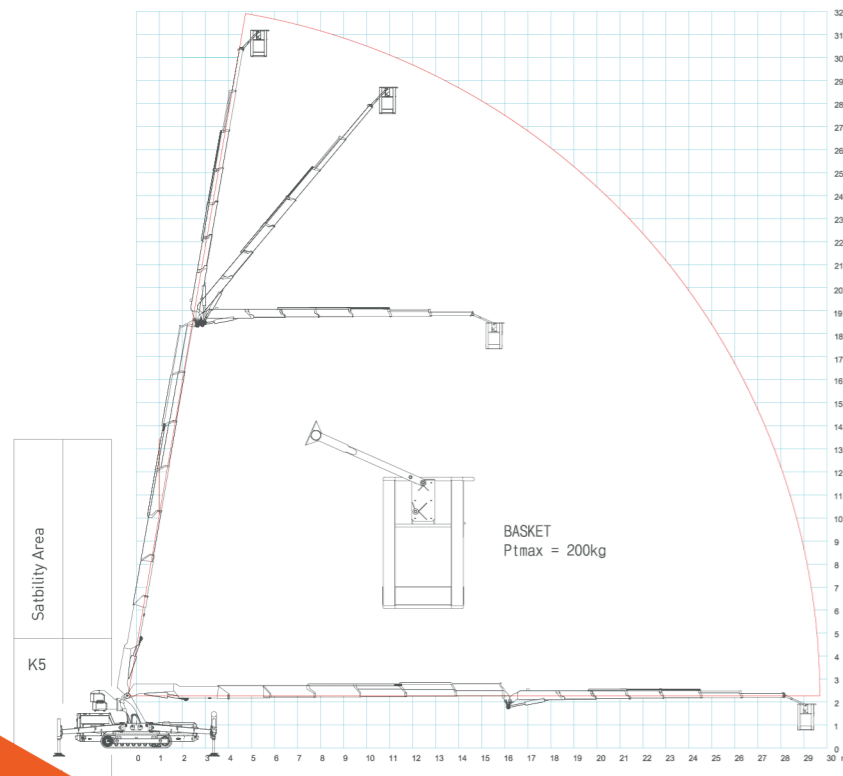
## Crane Options



## Load Chart



## Basket Load Chart



## Dimensions

